



PRICE Noise Control

Product Features:

- A competitive solution to undesirable duct noise
- A vast range of product solutions suitable for any HVAC application
- Developed to maximize insertion loss while minimizing system pressure drops
- Wide range of catalog performance data and construction characteristics

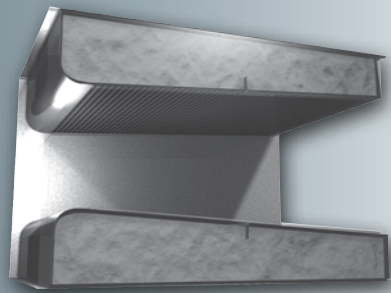


Sound is a common part of everyday life, but when a sound is unwanted, it is considered noise. When noise in a room is at unacceptable levels, it can be an annoyance, distracting the occupants and in turn resulting in higher stress levels and decreased productivity. This is why noise control has become just as important to a good HVAC system design as air movement, temperature control, and humidity management.

Silencer Type and Applications

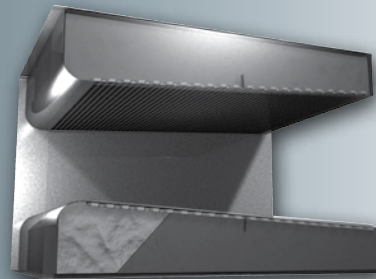
Absorptive

Absorptive silencers, which are also known as dissipative silencers, utilize sound absorbing media to attenuate sound levels. As the noise inside the duct passes through the silencer, the acoustic energy enters the baffles through holes in the internal perforated metal liner. Once inside the baffle the acoustic energy interacts with the absorptive media, which typically consists of strands of glass fiber. The friction between the acoustic energy and the glass fibers converts the acoustic energy into heat, thereby reducing the amount of acoustic energy which results in decreased sound levels at the discharge of the silencer.



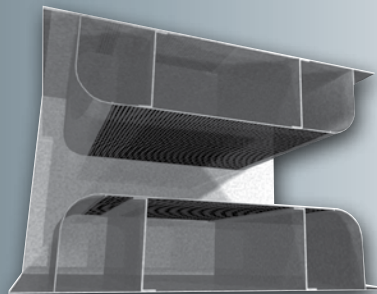
Film Lined Absorptive

Film lined absorptive silencers work on the same principle as the standard absorptive silencers. However, these silencers have a thin film liner wrapped around the acoustic media to protect the media from airborne contaminants and high levels of moisture that may be present in the air stream of some systems.



Packless

Packless silencers, sometimes referred to as reactive silencers, contain no absorptive material and are constructed solely of solid and perforated sheet metal. Attenuation of sound levels is achieved using multiple chambers of varying design located behind a perforated metal liner.



Rectangular Silencers

4

Absorptive Rectangular Silencers
RL, RM, RH
(Low, Medium and High Velocity Designs)

Absorptive Rectangular Extended Casing Silencers
RLX, RMX, RHX
(Low, Medium and High Velocity Designs)

Absorptive Rectangular Film Lined Silencers
RLT, RMT, RHT
(Low, Medium and High Velocity Designs)

Absorptive Rectangular Film Lined Extended Casing Silencers
RLTX, RMTX, RHTX
(Low, Medium and High Velocity Designs)

Specialty Silencers

6

Axial Fan Silencers
AFS
(High Velocity Designs)

Thin Line Return Dissipater
TLRD
(Air Transfer)

Cross Talk Silencers
XTL, XTZ, XTU
(Air Transfer)

Packless Silencers

5

Packless Rectangular Silencers
PRM

Packless Elbow Rectangular Silencers
PERM

Packless Circular Silencers
PCM, PCMX

Packless Elbow Circular Silencers
PECM, PECMX

Elbow Silencers

4

Absorptive Elbow Silencers
ERM

Absorptive Elbow Film Lined Silencers
ERMT

Absorptive Elbow Extended Casing Silencers
ERMX

Absorptive Elbow Extended Casing Film Lined Silencers
ERMTX

Circular Silencers

5

Absorptive Circular Silencers
CM, CH
(Medium and High Velocity Designs)

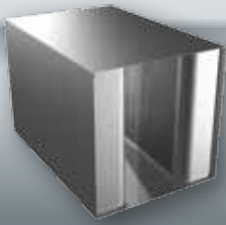
Absorptive Circular Film Lined Silencers
CMT, CHT
(Medium and High Velocity Designs)

Absorptive Circular Extended Casing Silencers
CMX, CHX
(Medium and High Velocity Designs)

Absorptive Circular Extended Casing Film Lined Silencers
CMTX, CHTX
(Medium and High Velocity Designs)

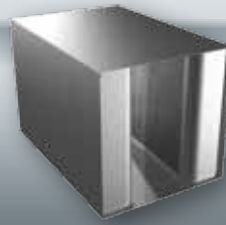
RECTANGULAR Silencers

Rectangular silencers are the standard for silencing noise transmitted through ductwork. Their simple design and relative low cost make them the first choice for the highest sound attenuation and lowest pressure drop on the air distribution system. They are available with a number of options that allow them to be integrated into any HVAC system with ease. A wide range of designs with low to high pressure drop and a large selection of media options can be applied to systems typically ranging from 0-2500 FPM.



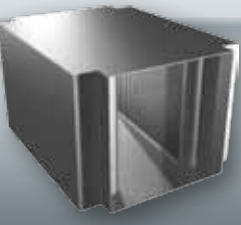
Absorptive Rectangular Silencers
RL, RM, RH (Low, Medium and High Velocity Designs)

Price Absorptive Rectangular Silencers utilize perforated internal baffles composed of acoustic grade fiberglass media for in duct noise attenuation. They are available in a wide range of materials, sizes and configurations.



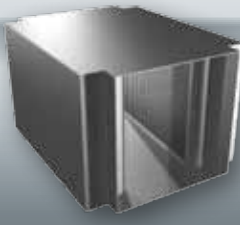
Absorptive Rectangular Film Lined Silencers
RLT, RMT, RHT (Low, Medium and High Velocity Designs)

Price Absorptive Rectangular Film Lined Silencers utilize a thin layer of Tedlar film wrap around the internal acoustic media to protect the media in applications where high levels of moisture and airborne contaminants are possible.



Absorptive Rectangular Extended Casing Silencers
RLX, RMX, RHX (Low, Medium and High Velocity Designs)

Price Absorptive Rectangular Extended Casing Silencers are designed for applications where higher insertion loss is required at lower frequencies, which is accomplished by extending the thickness of the internal baffles.

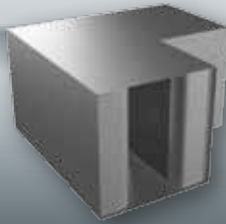


Absorptive Rectangular Film Lined Extended Casing Silencers
RLTX, RMTX, RHTX (Low, Medium and High Velocity Designs)

Designed for applications where higher insertion loss is required in the lower frequencies and additional protection against high levels of airborne contaminants and moisture is needed. This is accomplished by extending the thickness of the internal baffles and wrapping the internal acoustic media with a thin layer of Tedlar.

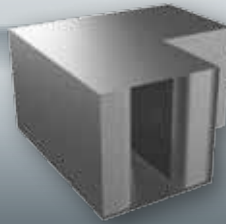
ELBOW Silencers

Elbow silencers have many of the same performance characteristics of rectangular silencers but are extremely versatile and an excellent choice for systems where straight lengths of ductwork are not available. Elbow silencers perform at or above the levels of rectangular silencers with a small increase in pressure drop on the system, and can be configured to suit most duct sizes without the use of transitions.



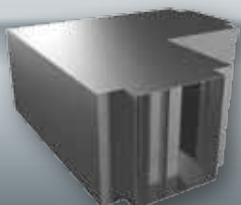
Absorptive Elbow Silencers
ERM

Price Absorptive Elbow Silencers are designed to fit where short duct runs do not allow for standard rectangular silencers. They also provide the added benefit of improved mid frequency performance.



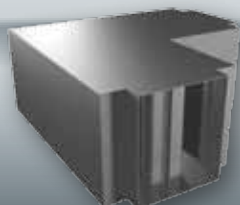
Absorptive Elbow Film Lined Silencers
ERMT

Price Absorptive Elbow Film Lined Silencers are designed to fit where short duct runs do not allow for standard rectangular silencers and provide additional protection of the acoustic media with a Tedlar film liner. The acoustic media is wrapped in a thin layer of Tedlar to protect against high levels of moisture and airborne particulate.



Absorptive Elbow Extended Casing Silencers
ERMX

Price Absorptive Elbow Extended Casing Silencers are designed for applications where higher insertion loss is required at lower frequencies, which is accomplished by increasing baffle thickness.

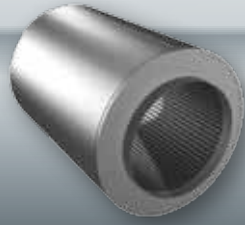


Absorptive Elbow Extended Casing Film Lined Silencers
ERMTX

Designed for short duct runs where higher insertion loss is required in the lower frequencies and additional protection against high levels of airborne contaminants and moisture is needed. This is accomplished by increasing baffle thickness and wrapping the internal acoustic media with a thin layer of Tedlar.

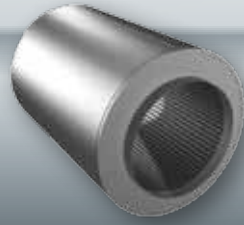
Absorptive Circular Silencers CM, CH
(Medium and High Velocity Designs)

Price Absorptive Circular Silencers provide in duct noise attenuation for circular duct work while eliminating the need for circular to rectangular transitions.



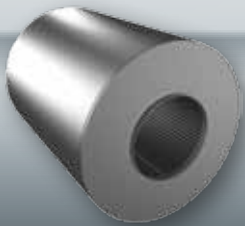
Absorptive Circular Film Lined Silencers CMT, CHT (Medium and High Velocity Designs)

Price Absorptive Circular Film Lined Silencers provide a solution to unwanted circular duct noise, with additional protection against airborne contaminants and high levels of moisture, while eliminating the need for circular to rectangular transitions. The internal acoustic media is protected by a thin layer of Tedlar film that is wrapped around the media.



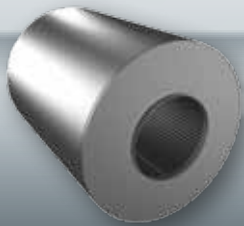
Absorptive Circular Extended Casing Silencers CMX, CHX (Medium and High Velocity Designs)

Price Absorptive Circular Extended Casing Silencers are designed with an expanded outer shell for applications where higher insertion losses are required at lower frequencies, while eliminating the need for round to rectangular transitions.



Absorptive Circular Extended Casing Film Lined Silencers CMTX, CHTX (Medium and High Velocity Designs)

Price Absorptive Circular Extended Casing Film Lined Silencers have the improved insertion loss performance in the lower frequencies with additional protection against high levels of airborne contaminants and moisture. This is accomplished by increasing baffle thickness and wrapping the internal acoustic media with a thin layer of Tedlar

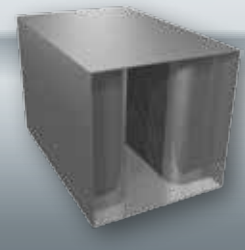


Circular silencers are an excellent solution when round ductwork is utilized in the system. They eliminate the need for square to round transitions that cause undesirable pressure drops and system effects. Circular silencers are available in a wide range of sizes, which allow for varying ranges of attenuation and pressure drop.

CIRCULAR Silencers

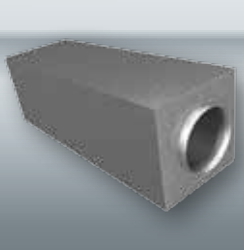
Packless Rectangular Silencers PRM

Price Packless Rectangular Silencers contain no acoustic media. Instead, these silencers are designed with special perforated liners and tuned chambers. Great for applications where corrosive gases are present or for clean room ventilation systems.



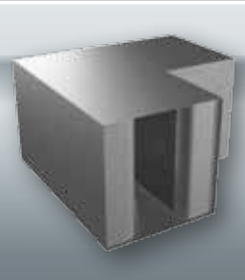
Packless Circular Silencers PCM, PCMX

Price Packless Circular Silencers contain no acoustic media. Instead, these silencers are designed with special perforated liners and multiple chambers that are tuned as resonators. Great for applications where corrosive gases are present or for clean room ventilation systems where round ductwork is being used.



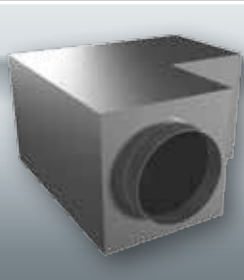
Packless Elbow Rectangular Silencers PERM

Price Packless Elbow Rectangular Silencers contain no acoustic media. Instead, these silencers are designed with special perforated liners and tuned chambers. Great for applications where corrosive gases are present or for clean room ventilation systems where standard rectangular silencers will not fit because of short duct runs.



Packless Elbow Circular Silencers PECM, PECMX

Price Packless Elbow Circular Silencers contain no acoustic media. Instead, these silencers are designed with special perforated liners and tuned chambers. Great for applications where corrosive gases are present or for clean room ventilation systems where round ductwork is being used and standard silencers will not fit because of short duct runs.



Packless silencers, sometimes referred to as reactive silencers, contain no absorptive material and are constructed solely of solid and perforated sheet metal. Attenuation of sound levels is achieved using multiple chambers of varying design located behind a perforated metal liner. As sound passes through the silencer the acoustic energy is dissipated in a manner similar to the Helmholtz resonator concept, which results in decreased sound levels at the discharge of the silencer.

PACKLESS Silencers

SPECIALTY Silencers

A standard silencer configuration can not always be adapted to work in every situation. In these cases it is necessary to develop a unique silencer that meets the requirements of the special application.



Axial Fan Silencers
AFS (High Velocity Designs)

Price Axial Fan Silencers are custom built for close coupling to axial fans. These silencers are engineered to provide noise attenuation at the source and improve aerodynamic performance at the inlet and discharge of the fan



Cross Talk Silencers
XTL, XTZ, XTU (Low Velocity Designs)

Price Cross Talk Silencers for low velocity air transfer between adjacent spaces utilize acoustic grade fiberglass media within lined internal baffles to maintain sound transmission ratings of the room partitions.



Thin Line Return Dissipater
TLRD (Low Velocity Designs)

Price Thin Line Return Dissipaters utilize multiple baffles, filled with acoustic media that are staggered in a frame that is only 4" thick. They are great for applications in place of standard transfer grilles to reduce sound transmission between adjacent spaces or to attenuate return air noise.

Completed in 2007, the Price Noise Control Sound Lab is a second generation state of the art acoustical testing facility. From ground breaking through commissioning, great care has been taken to ensure that the sound data being produced by the lab is accurate, repeatable and the most reliable in the industry.



Control Center



Elbow Source Chamber



Noise Control Fan Room



Straight Source Chamber



Reverberant Sound Chamber



Test Duct Work



Branch Duct Work





PRICE
INDUSTRIES

2975 Shawnee Ridge Court
Suwanee, Georgia USA 30024
Ph: 770.623.8050 Fax: 770.623.6404



PRICE
INDUSTRIES

1290 Barrow Industrial Parkway
Auburn, Georgia USA 30011



PRICE
INDUSTRIES

999 North Thornton Road
Casa Grande, Arizona USA 85222-3809



e.h. price
LIMITED

638 Raleigh Street
Winnipeg, Manitoba Canada R2K 3Z9
Ph: 204.669.4220 Fax: 204.663.2715



e.h. price
LIMITED

130B Pippin Road
Vaughan, Ontario Canada L4K 4X9
Ph: 905.669.8988 Fax: 905.669.8023

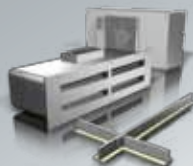
The founding principles of our company have never changed - business integrity, first class service and a commitment to people. Price manufacturing endeavors arose from our belief that we could supply superior products and services at a reasonable price. Our mission is to become the worldwide supplier of preference for air distribution products and services. You can rely on Price – our products and services – with confidence.

Your Local Price Representative:

Grilles & Diffusers



Critical Environments



Terminals



Sustainable Building



Noise Control

